



INSTITUTO NACIONAL DE ESTATÍSTICA
STATISTICS PORTUGAL

press release



April 13, 2023
TRANSPORT ACTIVITIES
Air Transport Flash Statistics
February 2023

MOVEMENT OF PASSENGERS AT NATIONAL AIRPORTS ABOVE THE PRE-PANDEMIC LEVELS

In **February 2023**, 4.0 million passengers and 16.9 thousand tonnes of freight and mail were handled at national airports, corresponding to year-on-year variations of +55.6% and -2.2%, respectively, compared to February 2022.

Vis-à-vis February 2020, when there were still no effects of the pandemic, the movement of passengers increased by 8.0% and the movement of freight and mail decreased by 3.5%.

In February 2023, there was a daily average of 73.6 thousand passengers disembarked at national airports, a value significantly higher than the one registered in February 2022 (47.8 thousand; +54.1%) and 13.1% above the one recorded in February 2020 (65.1 thousand).

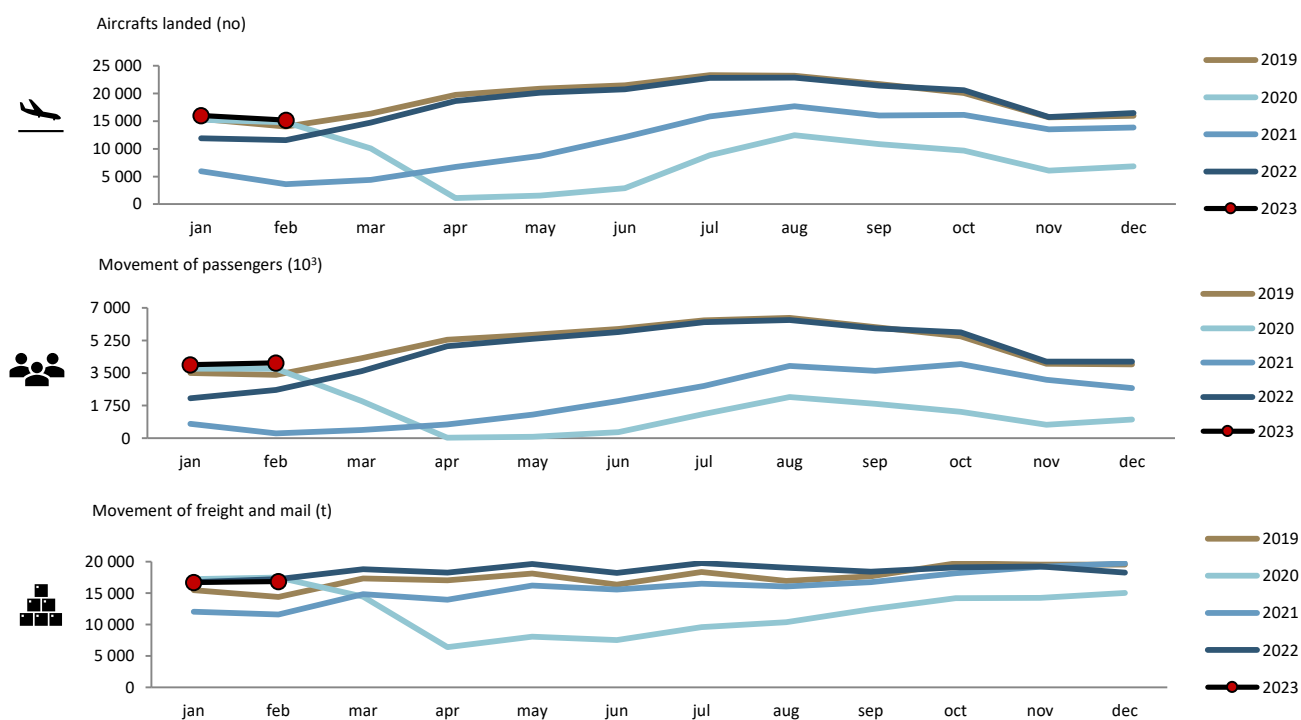
France was the main country of origin and destination of flights, with Spain and the United Kingdom alternating between 2nd and 3rd position depending on whether country of origin or destination of the flights.

4 million passengers handled at national airports in February

In **February 2023**, 15.2 thousand commercial aircrafts landed at national airports, corresponding to 4.0 million passengers (embarked, disembarked and direct transits) and 16.9 thousand tonnes of freight and mail were handled (+31.1%, +55.6% and -2.2%, respectively, compared to February 2022).

Compared to February 2020, there were increases of 2.7% in the number of aircrafts landed and 8.0% in the movement of passengers, with the movement of freight and mail decreasing by 3.5% (+5.2%, +5.7% and -3.2% in the previous month, respectively).

Figure 1. Aircrafts landed, passengers and freight/mail movement at national airports

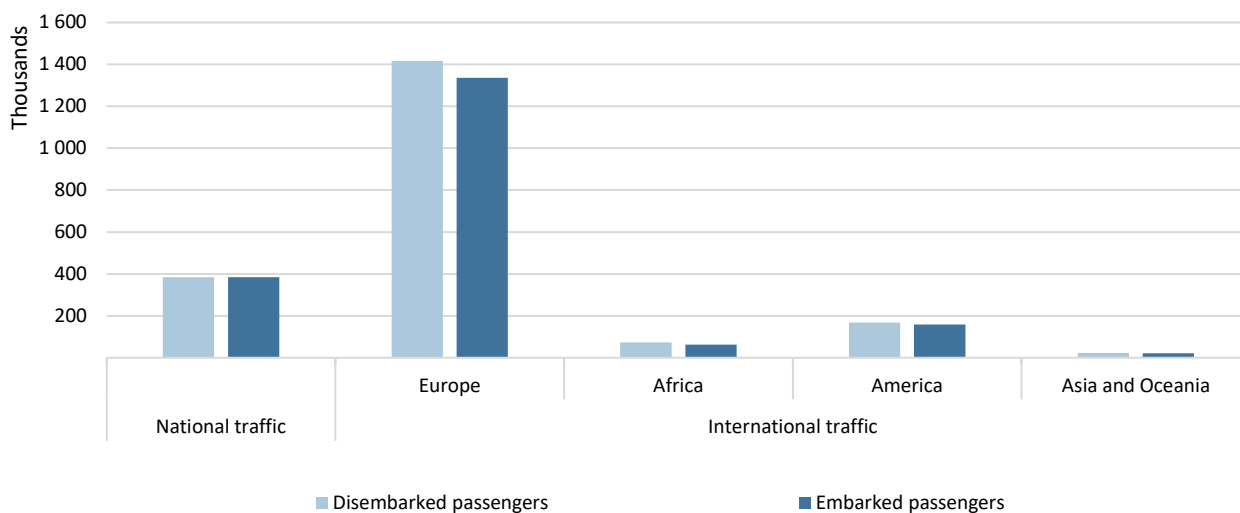


Source: Survey to airports and aerodromes (ANA/ANAC/Statistics Portugal)

In February 2023, 81.4% of the total number of passengers disembarked at national airports corresponded to international traffic, reaching 1.7 million passengers, mostly from the European continent (68.6% of the total), corresponding to an increase of 47.6% compared to February 2022. The American continent was the second main origin, concentrating 8.1% of the total passengers disembarked.

Regarding embarked passengers, 80.4% corresponded to international traffic, totalling 1.6 million passengers, having as main destination airports in the European continent (68.0% of the total), recording an increase of 50.8% compared to February 2022. Airports in the American continent were the second main destination of embarked passengers (8.1% of the total).

Figure 2. Passengers disembarked and embarked at national airports by nature of traffic and Continent of origin/destination – February 2023



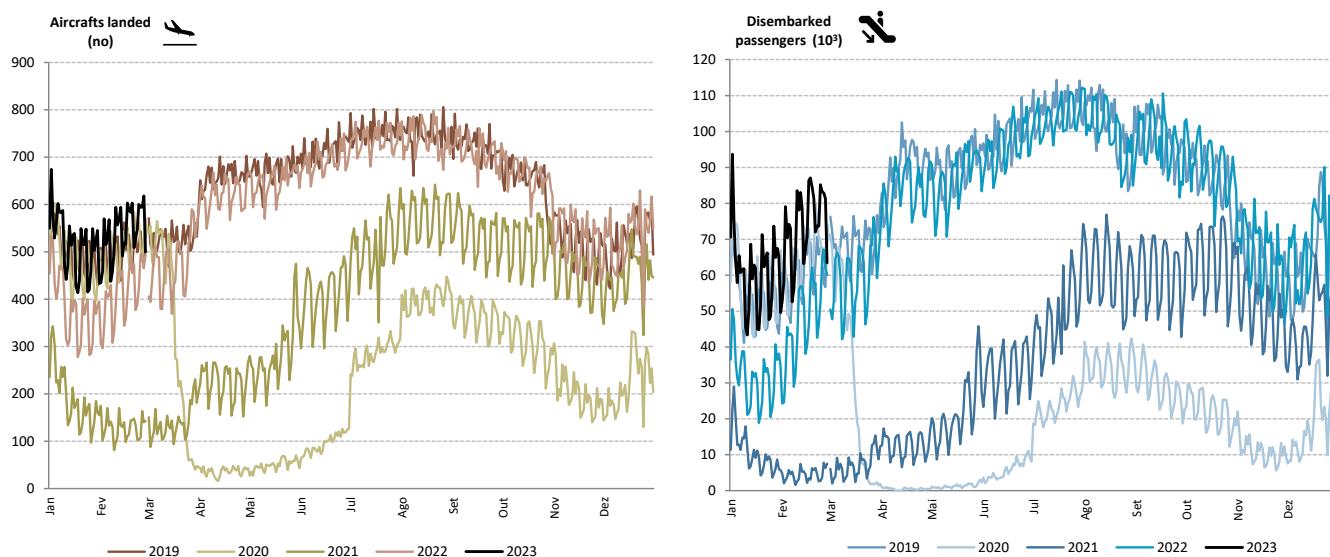
Source: Survey to airports and aerodromes (ANA/ANAC/Statistics Portugal)

Daily average of 73.6 thousand passengers disembarked

The daily movement of aircrafts and passengers is typically influenced by seasonal and weekly cycle fluctuations and was significantly affected by the impact of the pandemic in 2020 and 2021, showing a recovery over 2022.

In February 2023, there was a daily average of 73.6 thousand passengers disembarked at national airports, a value significantly higher than the one registered in February 2022 (47.8 thousand; +54.1%) and 13.1% above the one recorded in February 2020 (65.1 thousand).

Figure 3. Aircrafts landed and disembarked passengers at national airports – daily



Source: Survey to airports and aerodromes (ANA/ANAC/Statistics Portugal)

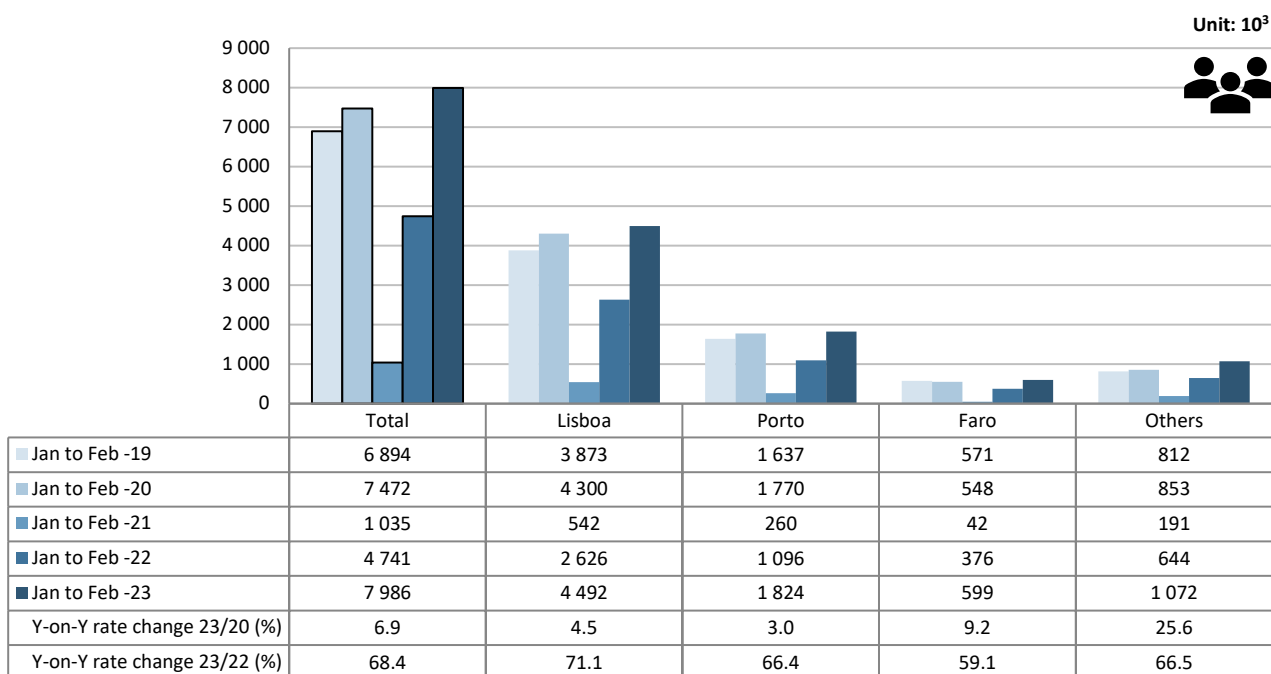
The movement of passengers in Lisboa airport increased by 71.1% in the first two months of 2023

In the first two months 2023, the movement of passengers in Lisboa airport corresponded to 56.3% of total handled passengers (4.5 million), increasing by 71.1% vis-à-vis the same period of 2022 (+4.5% compared with the same period of 2020). Faro airport handled 599 thousand passengers, an increase of 59.1% (+9.2% compared to the same period of 2020). Porto airport concentrated 22.8% of total passengers handled and increased by 66.4% (+3.0% vis-à-vis the same period of 2020).

Madeira airport was the 3rd airport with the highest passenger traffic considering the first two months of 2023 (636.0 thousand; +82.9%), surpassing Faro airport.



Figure 4. Movement of passengers at national airports



Source: Survey to airports and aerodromes (ANA/ANAC/Statistics Portugal)

France was the main country of origin and destination of flights

Considering the volume of passengers disembarked and embarked on international flights between January and February 2023, France was the main country of origin and destination of flights, recording increases of 51.3% in the number of disembarked passengers and 52.5% in the number of embarked passengers, compared to the same period of 2022. Spain and the United Kingdom alternated between the 2nd and 3rd position, depending on whether country of origin or destination of the flights. Germany occupied the 4th position and the 5th position was occupied by Brazil as the main country of origin and by Italy as the main country of destination of flights.

Table 1. Main countries of origin and destination of flights with passengers at national airports

Ranking	Country of origin (of the flight)	Jan to Feb 2023	
		Passengers disembarked (10 ³)	Y-on-Y growth rate (%)
1	France	545.2	51.3
2	Spain	459.0	103.1
3	United Kingdom	433.7	81.4
4	Germany	246.9	48.0
5	Brazil	212.0	72.4

Ranking	Country of destination (of the flight)	Jan to Feb 2023	
		Passengers embarked (10 ³)	Y-on-Y growth rate (%)
1	France	552.8	52.5
2	United Kingdom	465.3	79.4
3	Spain	464.3	104.8
4	Germany	255.6	39.2
5	Italy	207.1	106.6

Source: Survey to airports and aerodromes (ANA/ANAC/Statistics Portugal)

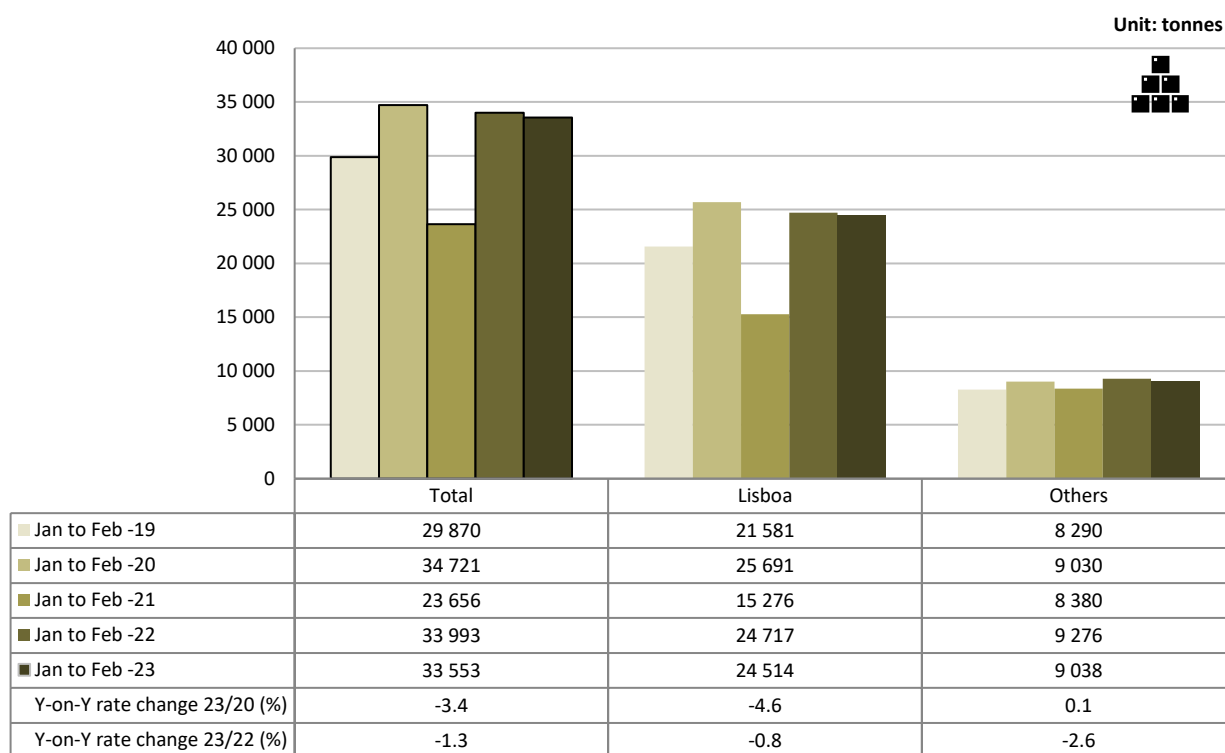


Movement of freight and mail remained below 2022 levels

Between January and February 2023, there was a 1.3% decrease in freight and mail handled at national airports (-3.4% compared with the same period of 2020). The movement of freight and mail at Lisboa airport represented 73.1% of the total, corresponding to 24.5 thousand tonnes (-0.8% compared with the same period of 2022).

Considering the group of other airports, the movement of freight and mail decreased by 2.6% (+0.1% compared with the period between January and February 2020).

Figure 5. Freight and mail movement at national airports



Source: Survey to airports and aerodromes (ANA/ANAC/Statistics Portugal)



INSTITUTO NACIONAL DE ESTATÍSTICA
STATISTICS PORTUGAL

press release



METHODOLOGICAL NOTES

In this Press Release the following statistical data are used:

2023: preliminary results;

2022: provisional results;

2019, 2020 e 2021: definitive results.

Main national airports (considered in this Press Release as national airports): Lisboa, Porto, Faro, Ponta Delgada, Madeira, Porto Santo, Beja, Horta, Flores, Santa Maria, Terceira, Pico, Graciosa, São Jorge, Corvo, Portimão, Bragança, Cascais, Vila Real and Viseu.

SOURCES: Survey to airports and aerodromes (ANA/ANAC/Statistics Portugal)

MAIN CONCEPTS:

Commercial aviation - Air transport flight performed for the public transport of passengers, freight or mail, for remuneration and for hire.

Commercial air traffic - Movement of aircrafts, passengers, freight and mail in commercial aviation.

Monthly indicators at Statistics Portugal portal:

[Aircrafts landed \(No.\) in airports by Geographic localization, Type of traffic and Nature of traffic; Monthly](#)

[Aircrafts landed \(No.\) in airports by Continent of origin; Monthly](#)

[Aircrafts unglued \(No.\) in airports by Geographic localization, Type of traffic and Nature of traffic; Monthly](#)

[Disembarked passengers \(No.\) in airports by Geographic localization, Type of traffic and Nature of traffic; Monthly](#)

[Disembarked passengers \(No.\) in Airports by Continent of origin; Monthly](#)

[Embarked passengers \(No.\) in airports by Geographic localization, Type of traffic and Nature of traffic; Monthly](#)

[Embarked passengers \(No.\) in airports by Destination continent; Monthly](#)

[Passengers in direct transit \(No.\) in airports by Geographic localization, Type of traffic and Nature of traffic; Monthly](#)

[Disembarked load \(t\) in airports by Geographic localization, Type of traffic and Nature of traffic; Monthly](#)

[Embarked load \(t\) in airports by Geographic localization, Type of traffic and Nature of traffic; Monthly](#)

[Disembarked mail \(t\) in airports by Geographic localization, Type of traffic and Nature of traffic; Monthly](#)

[Embarked mail \(t\) in airports by Geographic localization, Type of traffic and Nature of traffic; Monthly](#)



INSTITUTO NACIONAL DE ESTATÍSTICA
STATISTICS PORTUGAL

press release



ACRONYMS AND DESIGNATIONS

ANA	Portugal Airports, S.A.
ANAC	National Civil Aviation Authority
INE	Statistics Portugal

Next Press Release (monthly) - Air Transport Flash Statistics – May 12, 2023

Next Press Release (quarterly) - Transport activities (1st Q 2023) – June 6, 2023
